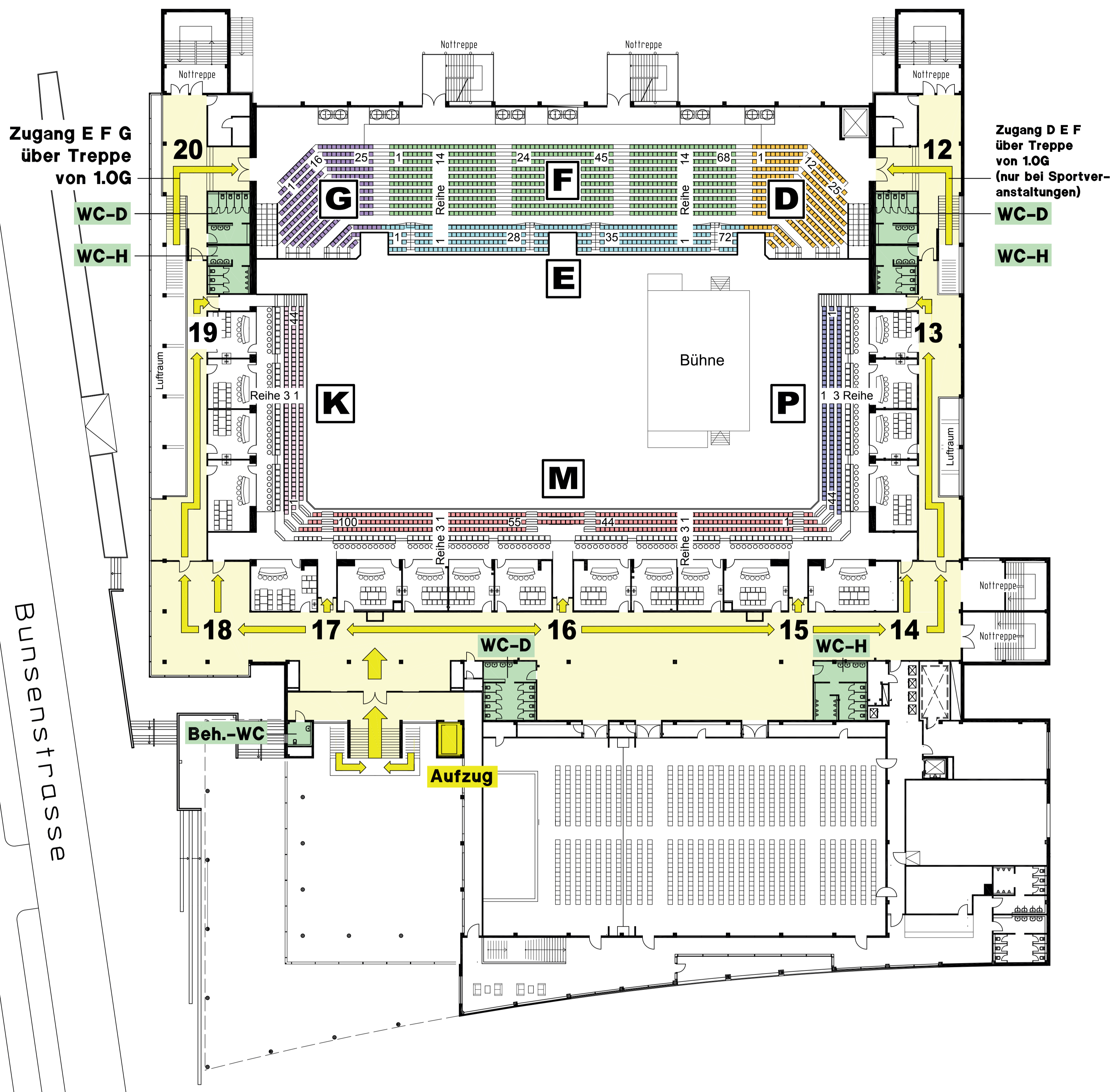
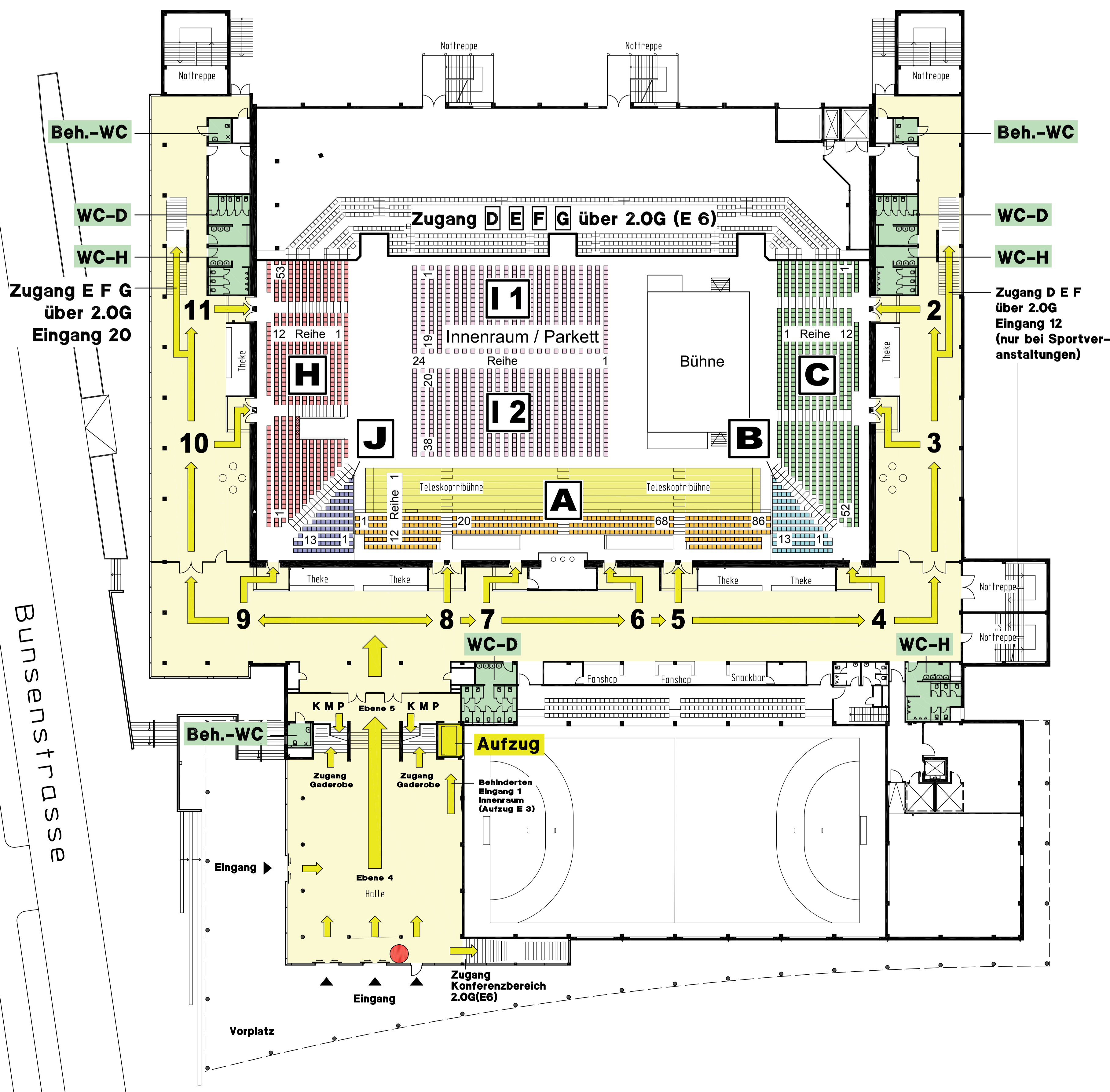


## 2. Obergeschoss Ebene 6



## 1. Obergeschoss Ebene 5



	Block	Reihe von - bis	Platz von - bis	Eingang Nr.	
1. OG (E 5)	A	1 - 10	1 - 30 31 - 43 44 - 56 57 - 86	8 7 6 5	
		11 - 12	1 - 17 45 - 64	8 5	
		B	1 - 12	1 - 13	4
		C	1 - 12	1 - 19 20 - 39 40 - 53	2 3 4
		D	1 - 14	1 - 25	12
	2. OG (E 6)	E	1 - 4	1 - 72	20
F		5 - 14	1 - 58	20	
G		1 - 14	1 - 25	20	
1. OG (E 5)	H	1	1 - 4 6 - 15 16 - 34	9 10 11	
		2	1 - 6 7 - 16 17 - 35	9 10 11	
		3	1 - 8 9 - 18 19 - 32	9 10 11	
		4	1 - 9 10 - 19 20 - 38	9 10 11	
		5	1 - 11 12 - 31 32 - 40	9 10 11	
		6	1 - 13 13 - 22 23 - 32	9 10 11	
		7	1 - 14 15 - 24 25 - 43	9 10 11	
		8	1 - 10 11 - 25 26 - 44	9 10 11	
		9 - 12	1 - 11 12 - 32 32 - 53	9 10 11	
	I 1	1 - 24 11 - 19	11 10		
	I 2	1 - 24 20 - 28 29 - 38	10 9		
	J	1 - 12	1 - 13	9	
2. OG (E 6)	K	1 - 3 21 - 44	18 19		
	M	1 - 3 24 - 73 74 - 100	15 16 17		
	P	1 - 3	1 - 22 23 - 44	13 14	

● Standort

## Ausschnitt Erdgeschoss Ebene 3/4

